



Temperature range: **+2°C/+8°C**

Refrigerating unit: **Internal**

Refrigerant/Cooling factor: **R404a / R507 / R448 / R449**

Specifications	JULIA 1.3	JULIA 1.9	JULIA 2.5
KOD	JU100	JU101	JU102
Length [mm]	1290	1900	2520
Capacity [dm ³]	480	720	960
Working capacity of the chamber [dm ³]	480	720	960
The area of shelves [m ²]	2,15	3,25	4,35
Cooling area of shelves [m ²]	2,15	3,25	4,35
Side panel thickness [mm]	30	30	30
Depth [mm]	855	855	855
Height [mm]	1160+/-10	1160+/-10	1160+/-10
Unit weight [kg]	153	240	300
Refrigerant	R134a R290	R134a R290	R404a R507 R448 R449
Rated voltage [V]	230/50Hz	230/50Hz	230/50Hz
Rated power of lighting [W]	17	28,8	34
Rated power [W]	570	638	1415
Cooling power [W]	519	896	1310

Standard equipment

internal cooling aggregate

static cooling

housing with base panel from staff side made of stainless steel

base and front panel made of painted steel – different colors available (IGLOO pattern book)

ecological polyurethane foam insulation

anodised aluminum profiles color gold or silver (IGLOO pattern book)

internal housing made of stainless steel

back sliding doors with combined glass

worktop – stainless steel

curved front glass openable

interior illumination – LED lights (confectionary color)

2 levels of white plastified reticulated shelves + lower base shelf

insulated plastic sides - selectable colour (IGLOO colour chart)

automatic defrost

automatic condenser vaporization

electronic temperature controller with digital display (IGLOO)

condenser impurity or fan operation failure alarm

Options

housing with base panel from staff side made of stainless steel

external housing made of acid resistant stainless steel

front panel color - different colors available (IGLOO pattern book)

base made of stainless steel

front panel made of acid-resistant stainless steel

base made of acid-resistant stainless steel

worktop - acid-resistant stainless steel

chrome reticulated shelves

additional lighting for 2 shelf levels - fluorescent LEDs (confectionery)

electronic temperature recorder + software

temperature recorder wire

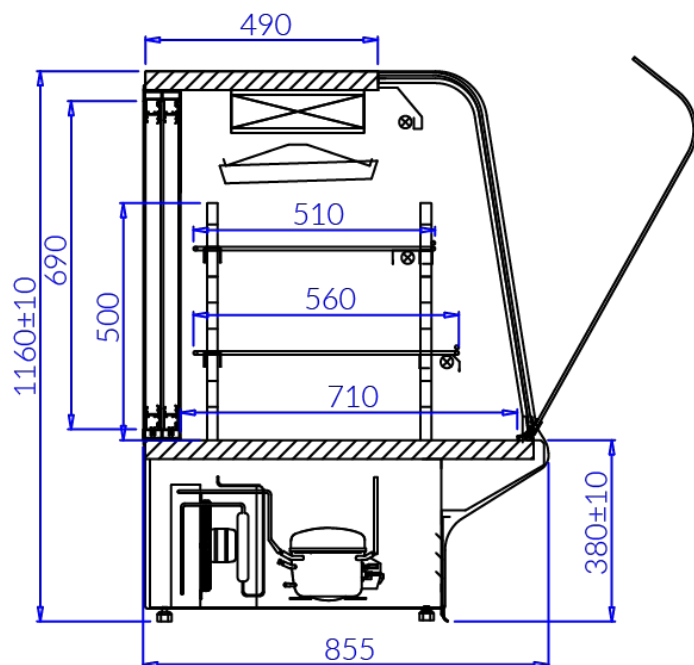
separate exposition with glass placed on the top of the device (JULIA NADSTAWKA 1.3)

separate exposition with glass placed on the top of the device (JULIA NADSTAWKA 1.9)

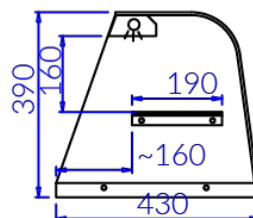
additional glass display shelf for JULIA Extension

interior lighting - LED lamps (confectionery)

JULIA



JULIA NADSTAWKA



Wymiar w świetle drzwi suwanych

